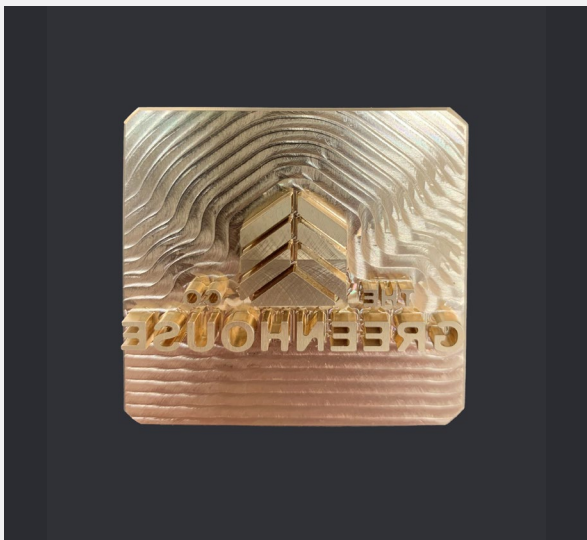


# Branding Irons Artwork Guide

**Our branding irons are CNC machined from a solid block of brass(electric) or stainless steel (LPG). We can include most simple text or graphics but here are a few guidelines:**

## Artwork Guidelines:

- Very simple fonts can usually be reproduced down to approx. 4mm high. More complex fonts will need to be larger and usually on larger size heads. Avoid fonts with tails and curlicues as they are difficult to machine.
- We recommend keeping the brand lines at least 1mm thick so they come out clearly when branded.
- Simple black and white symbols and logos can also be reproduced on a branding iron but may incur extra charges to machine this detail.
- Gaps between letters and lines need to be at least 1mm to retain a gap when branded and to allow for machining tools.
- It is best to have black text/lines on a white background, as the reverse can tend to darken during branding.
- A dxf file is our preferred artwork format but we can convert most file formats to dxf. This will incur an artwork cost and the final price depends on the complexity of the design. The price range given on the website represents this variation. We do not offer a design service.



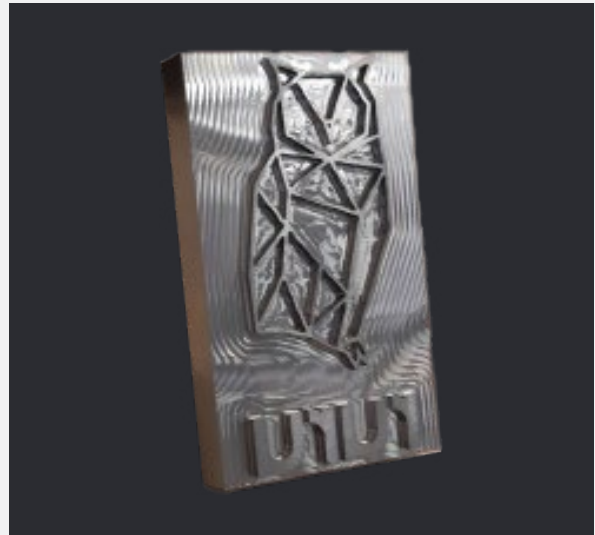
50x50 mm electric head – a more complex font



25mm dia electric head – very simple font

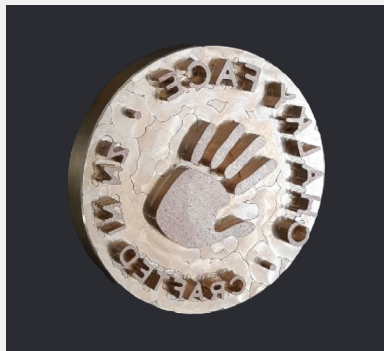


**EG of logo too difficult to reproduce -Too much detail, date too small and a finely detailed font**



**50mm x 75mm LPG head- clear spacing and image**

### **Examples of detail we can achieve:**



**50mm Dia**



**50mm Dia**



**25mm x 75mm**

If you are unsure if your logo is suitable, just upload a copy on our quote request form on the website and we will let you know, but use the guidelines to make any adjustments before sending for quote as we do not create the artwork.

### **Materials:**

As well as solid wood, a range of other materials can be branded. Some such as bamboo board and MDF will brand with very similar results to solid wood.

Others such as plastic, leather and cork require a lower temperature to brand.

This can be achieved with our LPG branding irons by simply not heating the brand for as long, while our electric branding irons use a dimmer controller to reduce the operating temperature.

**The website has pricing guides and a quote request form that will allow us to find the best type, heat source, size and shape of branding iron for you from within our standard ranges. Complete the form and request a quote to start the process.**